

Understanding the Registry Patient and Caregiver Initial Login Instructions

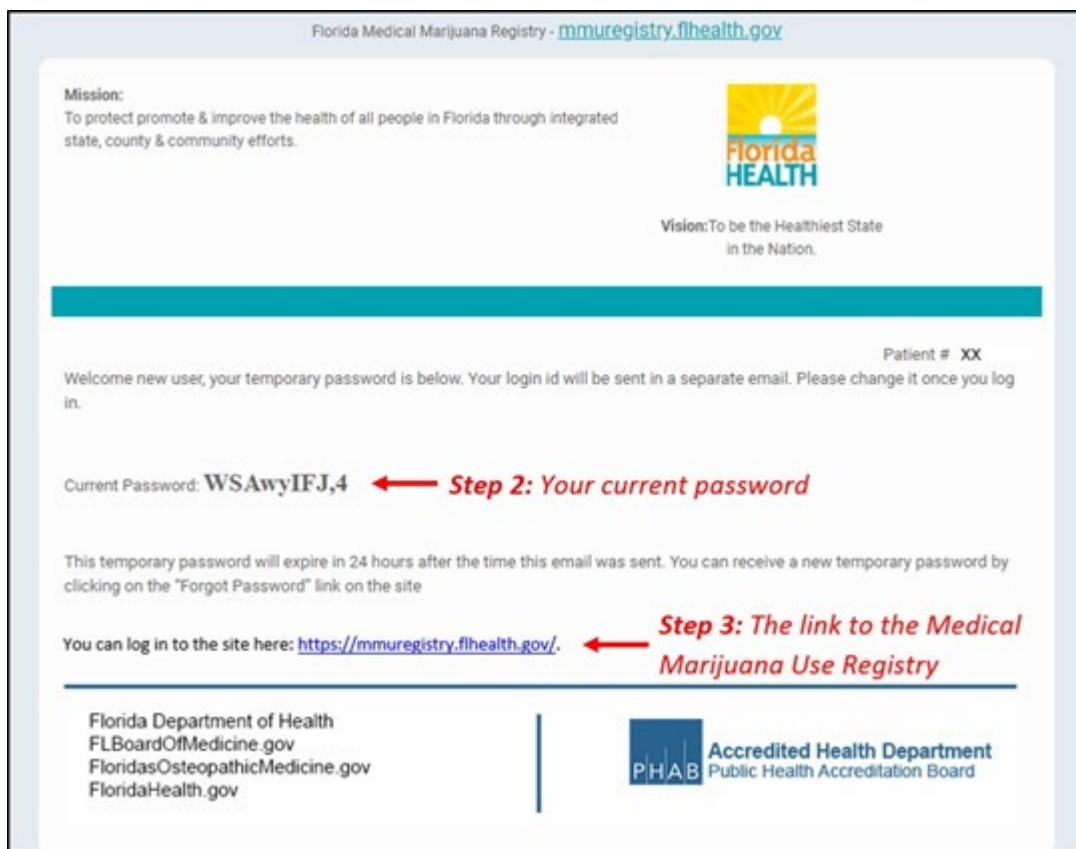
Step 1: Open the personal email account that you gave to your doctor when they added you to the Medical Marijuana Use Registry.

Step 2: Locate and open the emails with “Medical Marijuana Use Registry New User Account” as the subject line. One email contains your username (your username is the email you supplied to your doctor). The second email contains your temporary password. Remember your temporary password, you will use it to log in.

Passwords in the Registry are case sensitive. Temporary passwords are in the following order: 3 capital letters, 2 lower case letters, 3 capital letters, a symbol and a number. For example, ABCdeHIJ#0 (please note that the lower-case L and a capital i look the same).

*If you do not find the “Office of Medical Marijuana Use New User Account” email, [click here](#) for additional information.

Step 3: Click on the Registry link provided in the email. This link takes you to the Registry’s home page.



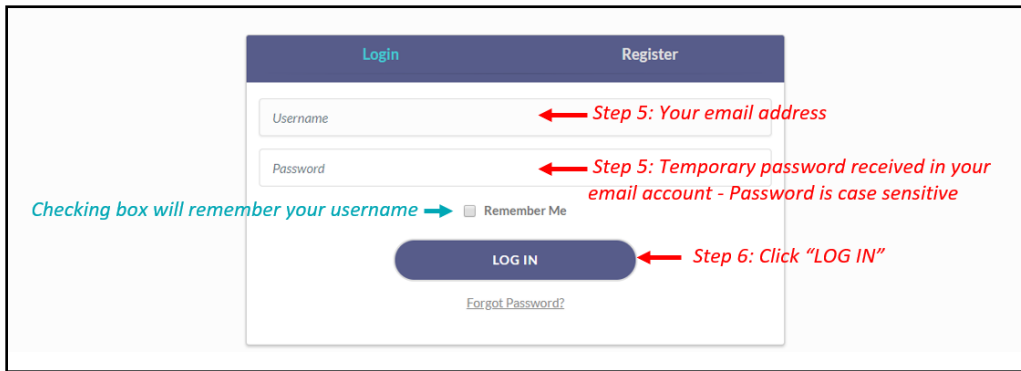
Step 4: Click “Log In.”



Step 5: Type your username and temporary password in the correct boxes on the screen.

The temporary password is case sensitive, it is only valid for one successful login attempt and must be used within 24 hours of it being sent to you.

Step 6: Click “Log In.”



After you log in, you will be instructed to change your password.

Step 7: Type your temporary password into the “Current Password” box (this is the temporary password that was sent to your email in Step 2).

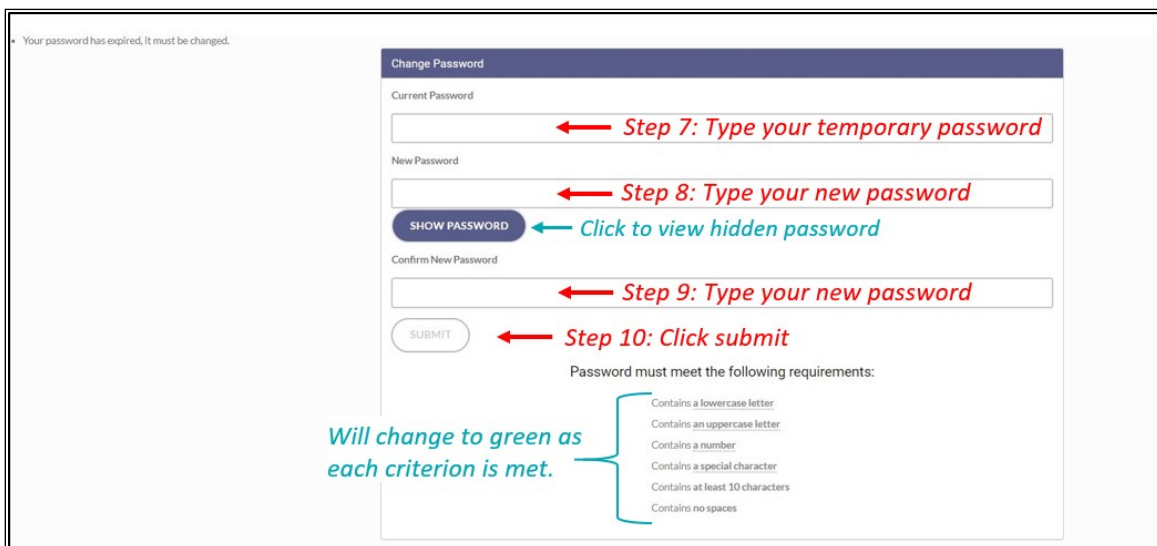
Step 8: Create your new password. You need to add a password to your Registry account that is unique to you. It must be 10 characters long and include each of the following:

- Lowercase letters (a-z)
- Uppercase letters (A-Z)
- Numbers (0-9)
- Special characters (!"#\$%&'()*+,-./:;<=>?@[\\]^_`{|}~)

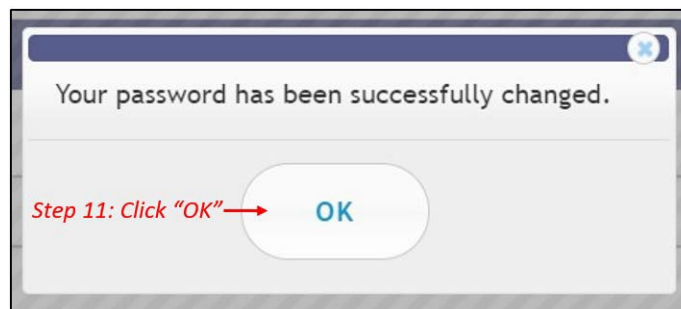
**You can click “Show Password” for help.*

Step 9: Confirm your new password.

Step 10: Click “Submit.”



Step 11: A confirmation message box will appear. Click “Ok.”



You will automatically be redirected to your Registry home page.